

ARTICULATION VISUAL GUIDE

Normal

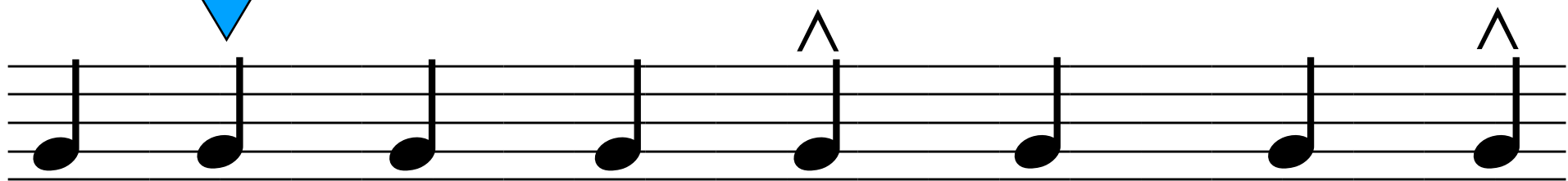
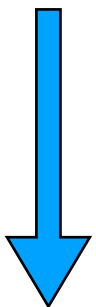
sfz *sfz* *sfz*

RELATIVE DYNAMICS for ARTICULATIONS VISUAL GUIDE

A musical staff with two dotted lines. The top line is labeled *f* and the bottom line is labeled *mf*. A blue arrow labeled "Normal" points from the top line down to the middle of the staff. Six musical notes are shown, each with a different articulation symbol. From left to right: 1. A note with a staccato (*stacc.*) articulation, positioned below the *mf* line. 2. A note with a tenuto (*ten.*) articulation, positioned on the *mf* line. 3. A note with a marcato (*marcato*) articulation, positioned between the *mf* and *f* lines. 4. A note with an accent (*accent*) articulation, positioned on the *f* line. 5. A note with a sforzando (*sforz.*) articulation, positioned on the *f* line. 6. A note with a sforzando (*sforz.*) articulation, positioned on the *f* line.

ARTICULATION VISUAL GUIDE

Normal



.		—	>	^	<i>sfz</i>	> <i>sfz</i>	^ <i>sfz</i>
tOH	tOH	TOH	ToH	T ^o H	T OH	T OH	T OH
dOH	dOH	DOH	DoH	D ^o H	D OH	D OH	D OH

Dynamics Ladder

